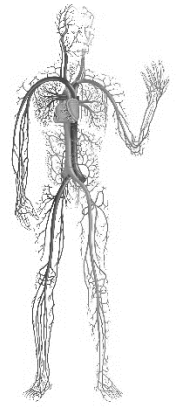


# GRADE 11 BIOLOGY

W/ MS. BURNS

BLOCK 4: 2:10 - 3:25

1<sup>st</sup> SEMESTER, 2019/2020



WELCOME TO GRADE 11 BIOLOGY, A COURSE ALL ABOUT...YOU!

This course is about developing an understanding of the human body and how it works. Through experimentation and research, we will explore how a variety of body systems work. This course will focus largely on lab work and projects – dedication, attendance and critical thinking are essentials for success!

<b>NOT COOL</b>	<b>VERY COOL</b>
RUINING SOMEONE ELSE'S OPPORTUNITY TO LEARN	ATTENDANCE! 
 CELL PHONE ADDICTION	 ASKING FOR HELP!
GIVING UP ON YOURSELF 	RESPECT! 
WASTING TIME	EFFORT!

# TOPICS

WELLNESS & HOMEOSTASIS

DIGESTION AND NUTRITION

TRANSPORTATION & RESPIRATION

EXCRETION & WASTE MANAGEMENT

PROTECTION & CONTROL (Immune System & Nervous System)

---

## ASSESSMENT

DAILY ASSESSMENT – 15%

Observation, Conversation and Products.

DAILY CHALLENGES – 15%

Throughout the semester, we will be ensuring our understanding of the material by consistently monitoring our comprehension. These check-ins will be directly related to the previous day's lesson and are designed to prepare students for the exact type of questions they will encounter in tests and exams. These quizzes will be amalgamated in students' journals, to organize studying.

LABS, ASSIGNMENTS & PROJECTS – 25%

Hands-on experiments will be conducted in class regularly and assessed through detailed Lab Reports. Students who are absent for Experiments must communicate immediately about alternate assignments / alternate times to complete the Experiment. Assignments are to be completed by assigned due dates (5% daily deductions).

TESTS – 25%

Understanding of each unit will be assessed through a test. Tests will be a mix of multiple choice, short and long answer. Each test will be preceded by in-class review. Tests will follow similar formatting to quizzes, experiments and assignments.

FINAL EXAM – 20%

The final exam will be a cumulative assessment of the entire course. The exam will be similar in design to the unit tests.

**EXCUSED CLASSES WILL ONLY BE RECOGNIZED BY PARENT+/GUARDIAN COMMUNICATION WITH MYSELF OR THE SCHOOL.**

WWW.BURNSPVW.WEEBLY.COM

HBURNS@SUNRISESD.CA