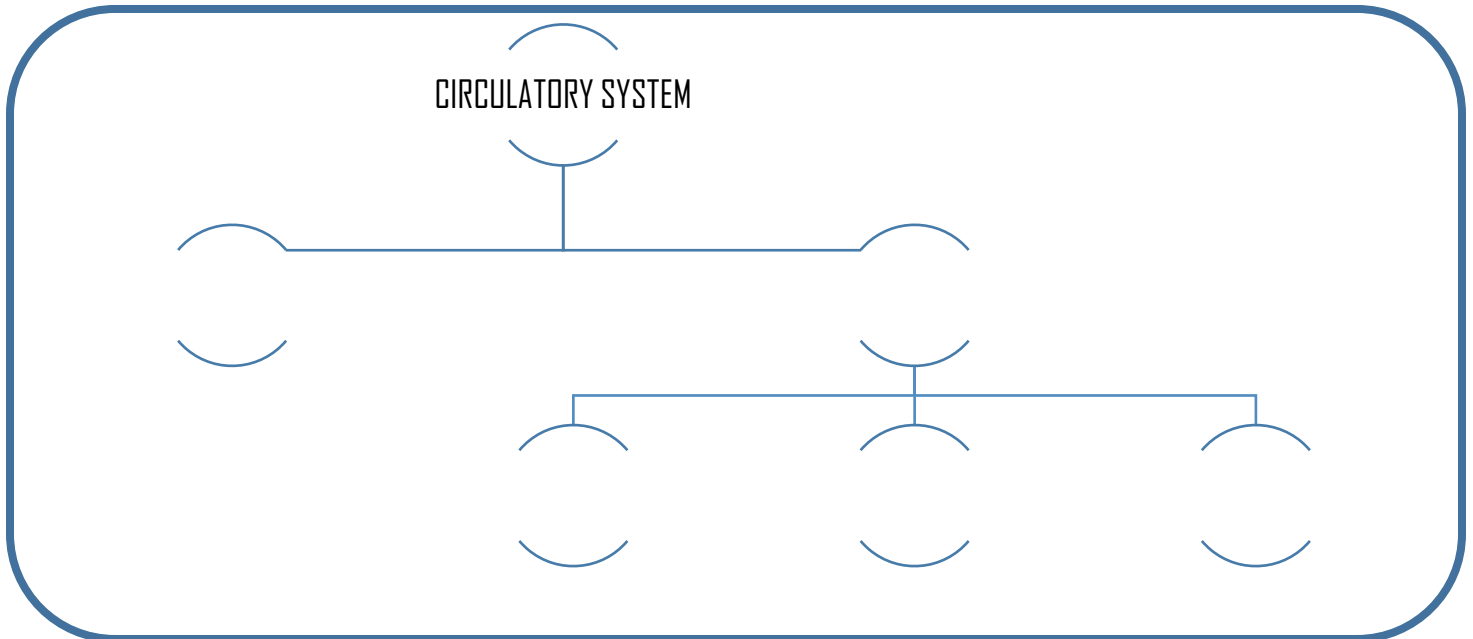


CIRCULATION



With each heartbeat, blood is sent throughout our bodies, carrying _____ to every cell.

Every day, the approximately 10 pints (_____) of blood in your body travel many times through about 60,000 miles (_____) of blood vessels that branch and cross, linking the cells of our organs and body parts.



Our bodies have two circulatory systems...

	Short loop from the _____ to the _____ and back again.
SYSTEMIC CIRCULATION <i>(the system we usually think of as our circulatory system)</i>	

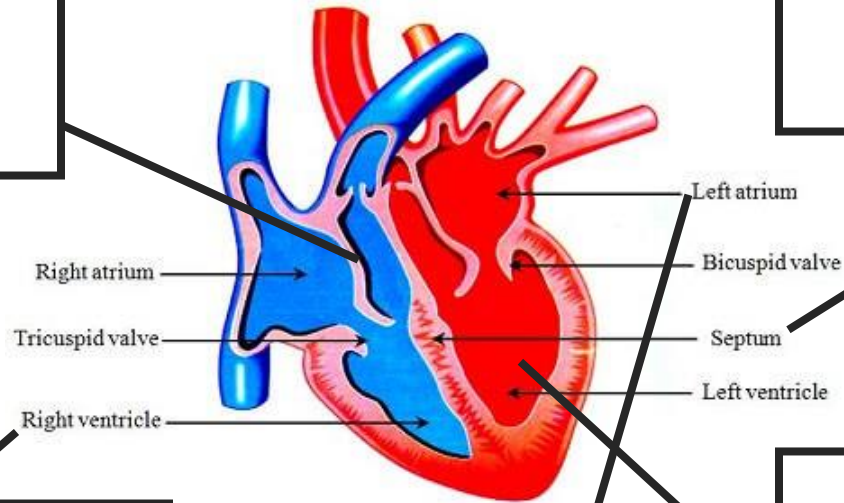
The heart is the key organ in the circulatory system. As a hollow, muscular pump, its main function is to propel blood throughout the body.

It usually beats from _____, but can go much faster when necessary.

It beats about _____ times a day, more than _____ times per year, and about 2.5 billion times in a 70-year lifetime!

RIGHT SIDE

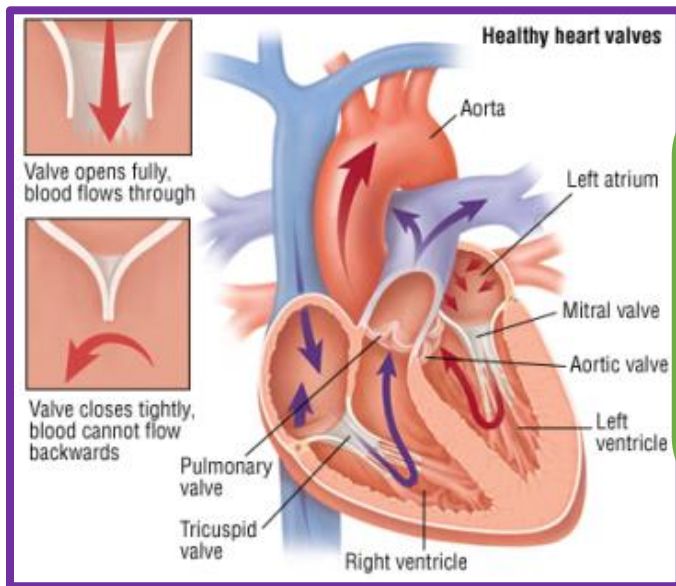
ANATOMY OF THE HEART



VENTRICLE

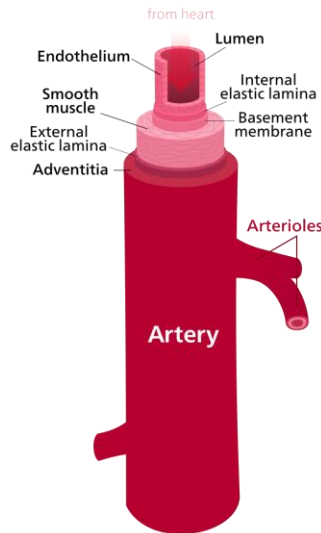
ATRIUM

LEFT SIDE



WHAT ARE VALVES? WHAT DO THEY DO?

BLOOD VESSELS

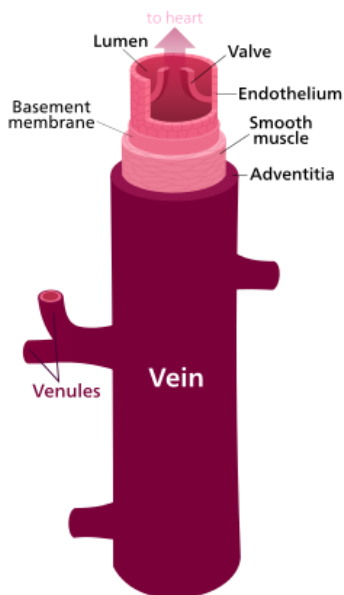
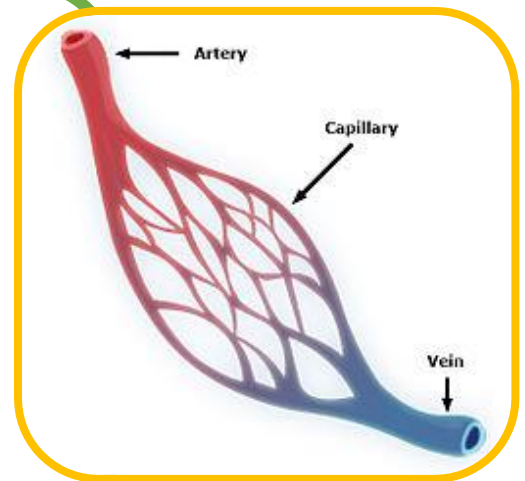


ARTERIES

- .
- .

CAPILLARIES

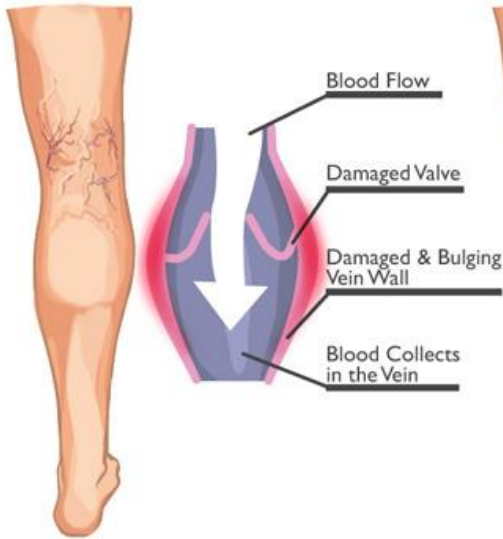
- .
- .
- .
- .



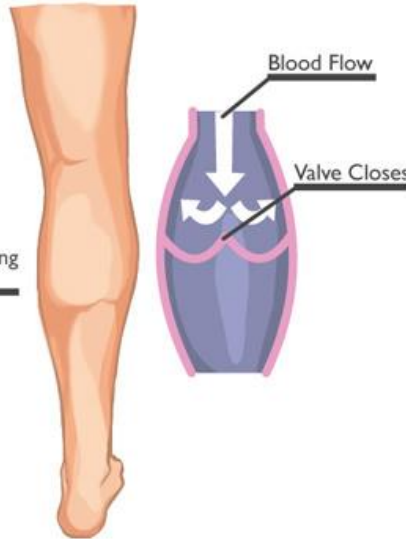
VEINS

- .
- .
- .

VARICOSE VEINS



HEALTHY VEINS



VARICOSE VEINS

Surface veins become large and bulge due to

Causes:

