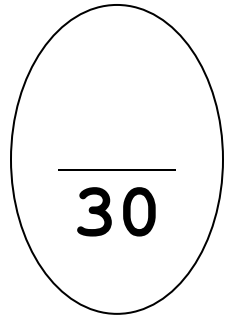


U4:A1 Excretory System



1. What is excretion? [1 Pt]
2. How is excretion different from defecation? [1 Pt]
3. What is ammonia? [1 Pt]
4. What is urea? [1 Pt]
5. Referring to the chart in your notes, what wastes do each of the following excretory organs eliminate: [4 PTs]

Kidneys:

Lungs:

Skin:

Liver:

6. What are the five main functions of the kidneys? [5 PTs]

7. How big are your kidneys? Where are they located in your body? [2 PTs]

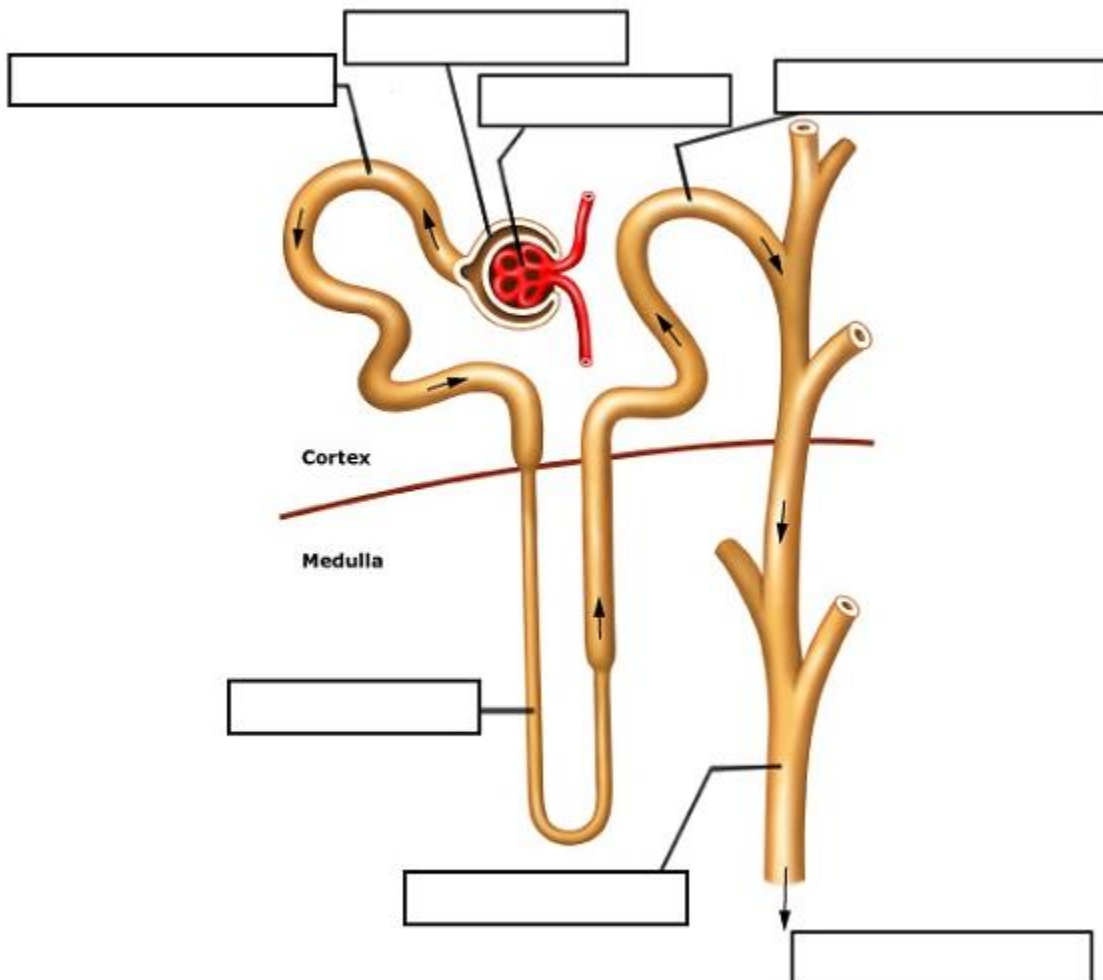
8. Circle either out or in for the questions below: [2 PTs]

Renal artery = Blood out / in ?

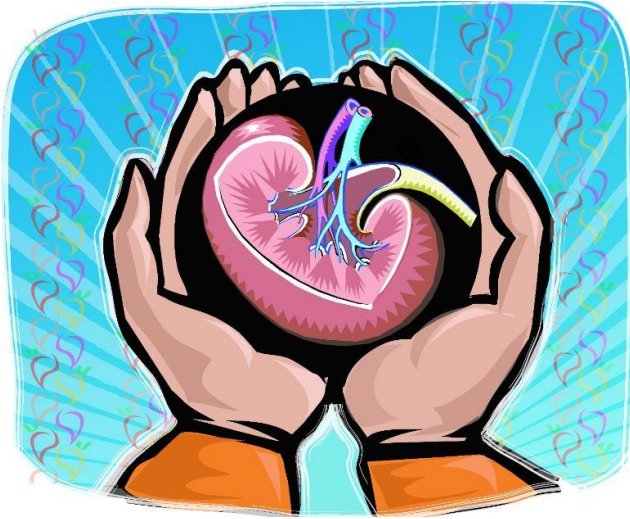
Renal vein = Blood out / in ?

9. Why does the colour of your urine change shades of yellow? [1 PT]

10. Label the following nephron diagram: [7 PTs]



11. Your kidneys are like a...



In the space below, create an ANALOGY for kidneys. *Think back to when we did this for animal cells – this is the same idea!*